

# FTA 지도

2020년 1월~9월 주요품목

## 2020년 1월~9월 주요품목 - 수출

수출(MTI 3단위)

자동차 35%

합성수지 15%

자동차부품 13%

플라스틱 제품 8%

석유제품 7%

철강판 6%

건전지 및 축전지 5%

정밀화학원료 4%

기초유분 3%

고무제품 3%

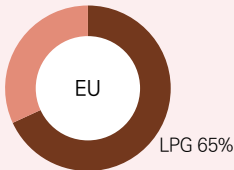
주: FTA 대상금액을 기준으로 주요품목 선정

수출



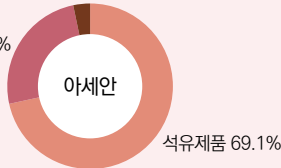
광산물

석유제품 35%

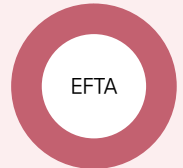


기타비금속광물 3.8%

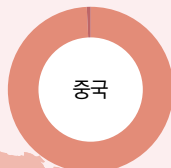
금은빛백금 27.1%



금은빛백금 100%



기타비금속광물 0.8%



기타비금속광물 100%



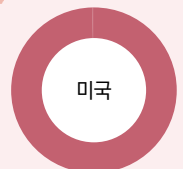
기타비금속광물 0.4%



석유제품 99.2%

캐나다

금은빛백금 0.3%



석유제품 99.6%

LPG 0.2%

기타비금속광물 0.1%



석유제품 100%

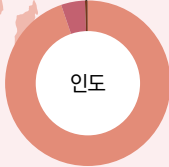
콜롬비아

금은빛백금 3.2%

기타금속광물 0.5%

기타비금속광물 0.03%

기타 0.02%



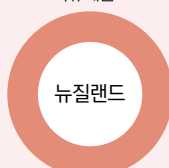
석유제품 99.4%

인도

기타비금속광물 100%



석유제품 100%



기타비금속광물 0.012%

LPG 3.3%



호주

뉴질랜드

칠레

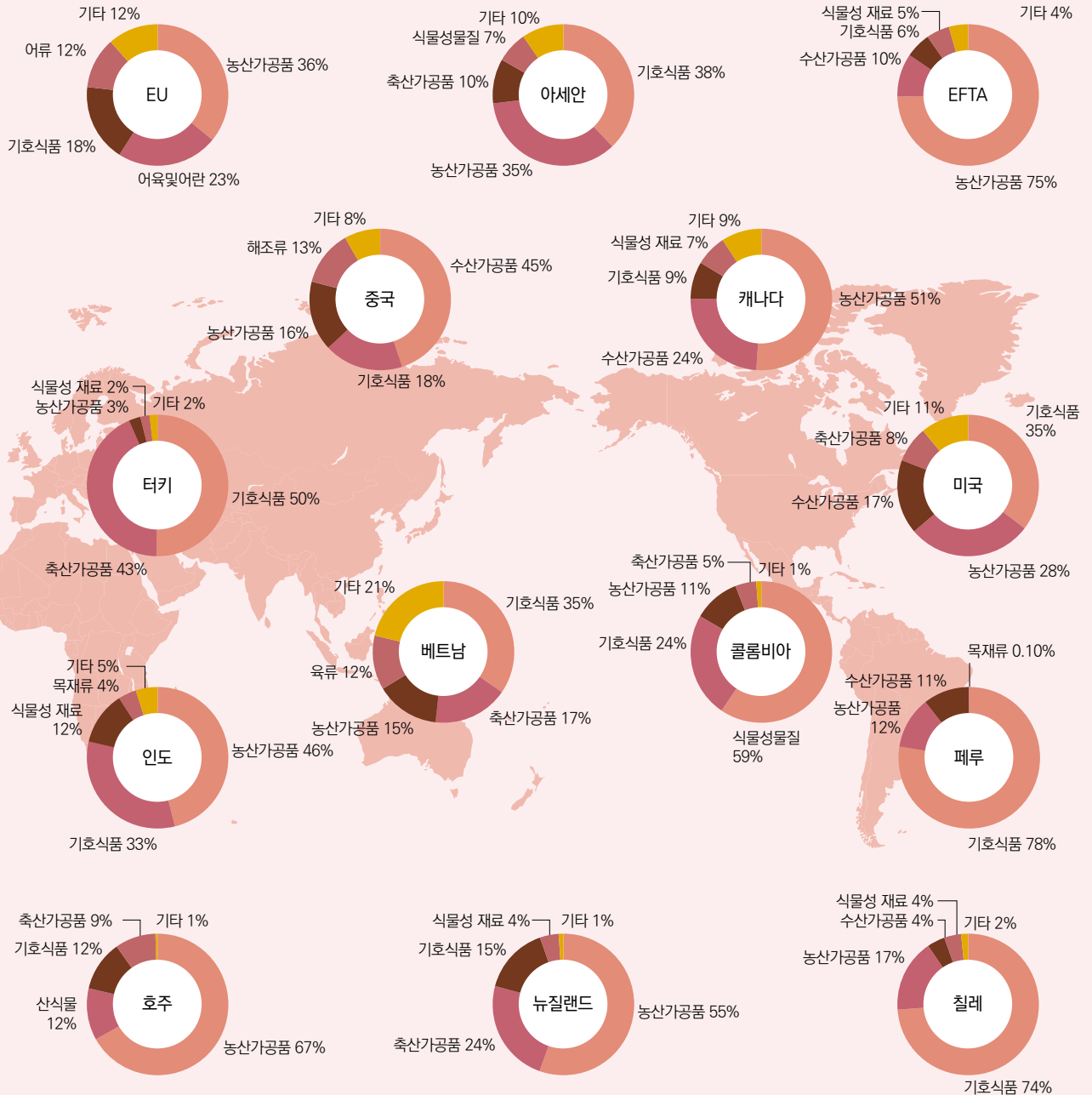
석유제품 96.7%



수출



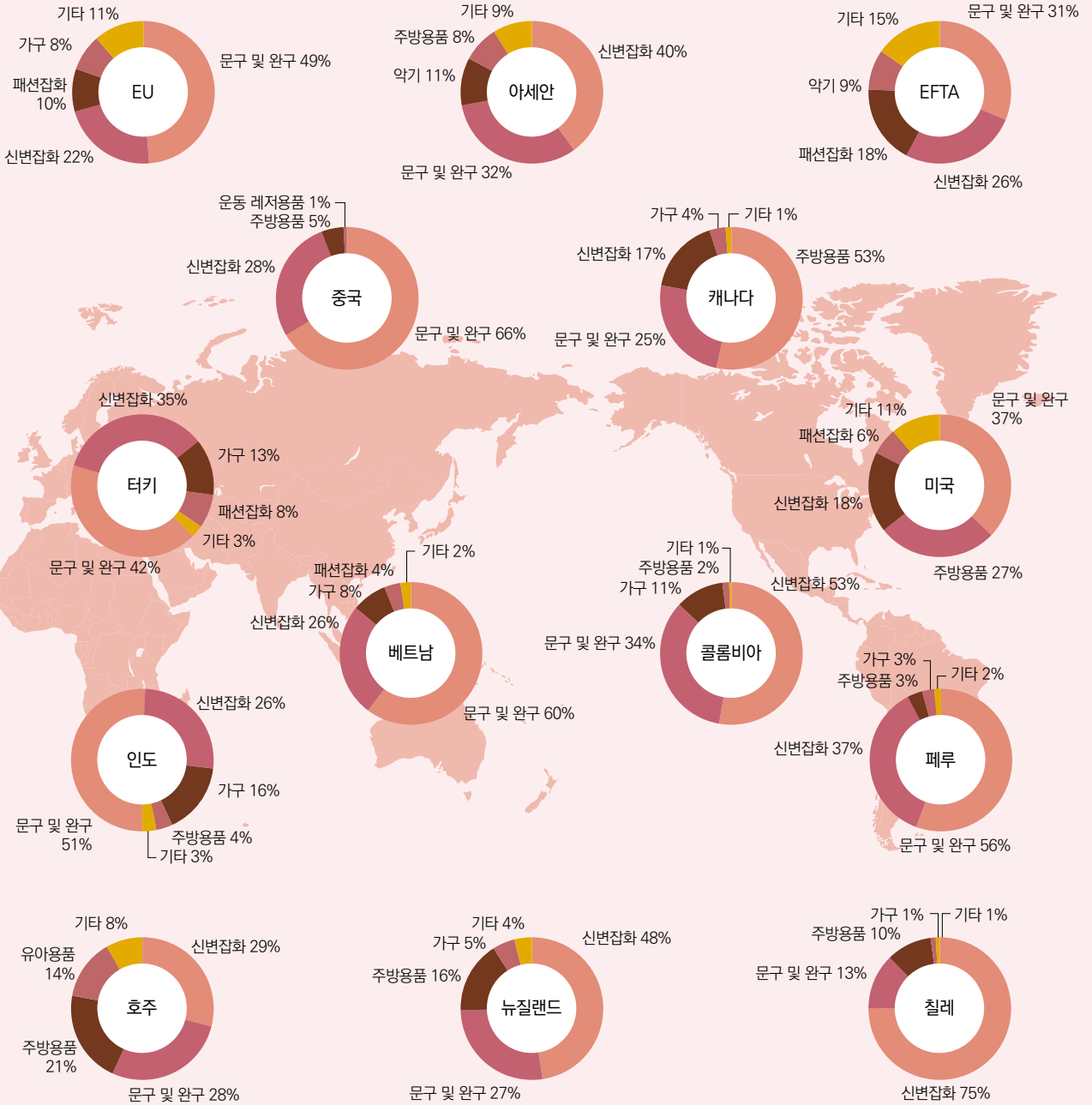
농림수산물



수출



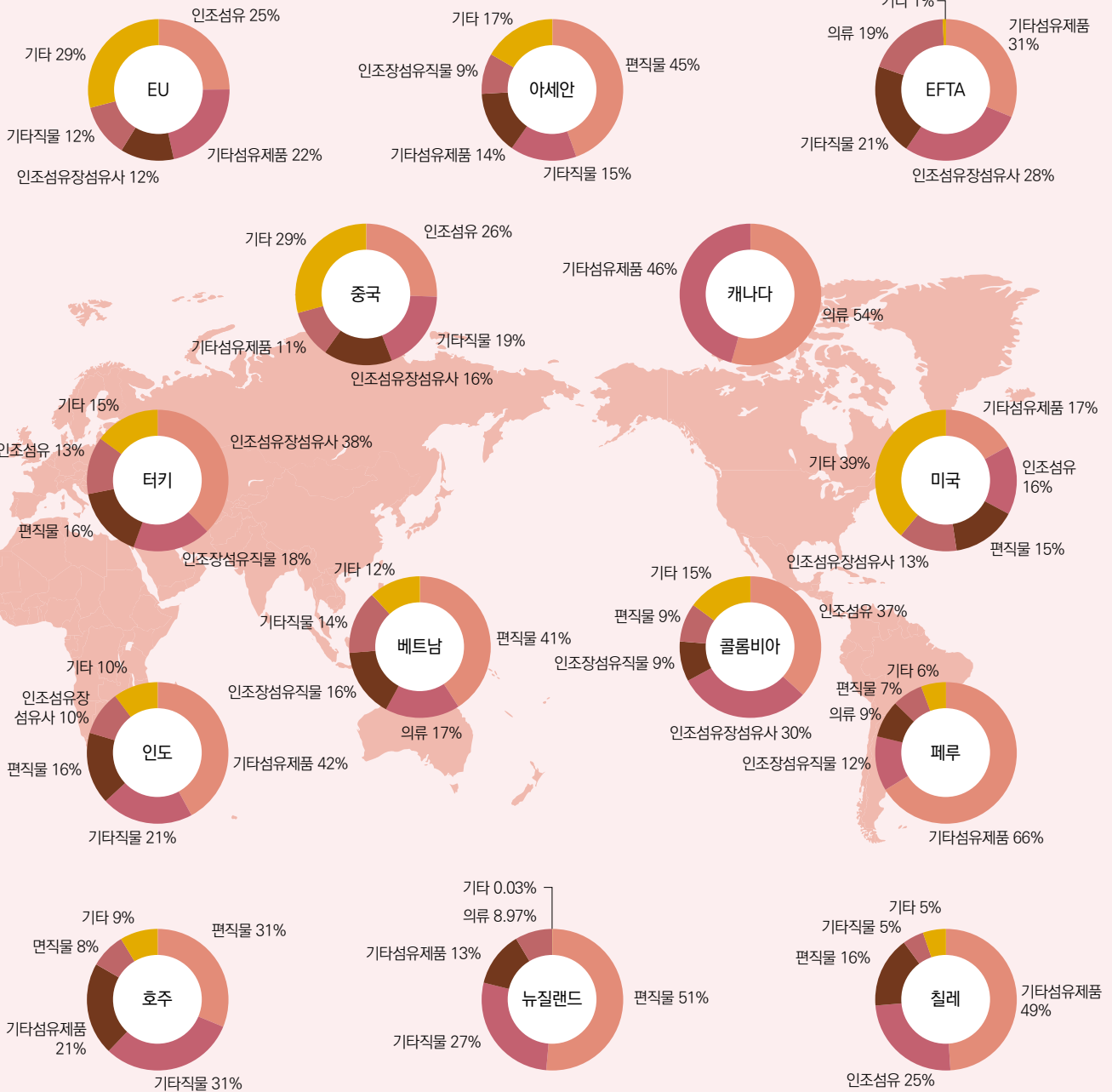
생활용품



수출



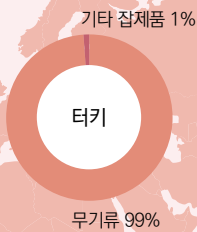
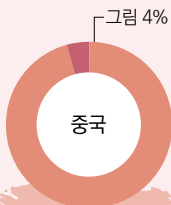
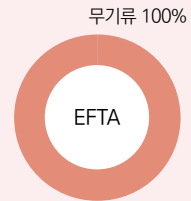
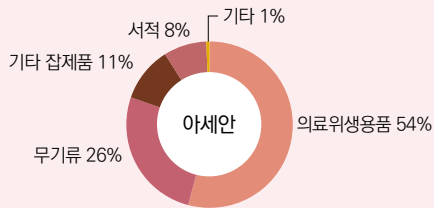
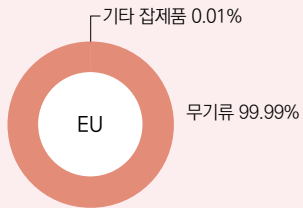
섬유류



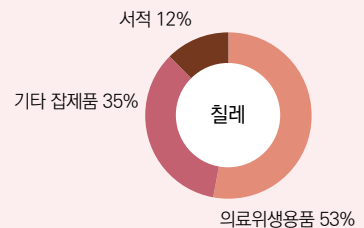
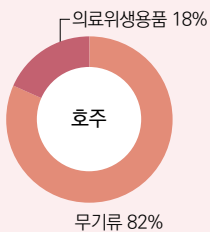
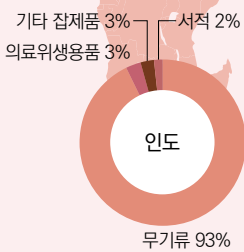
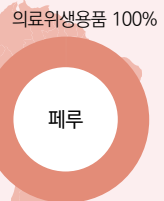
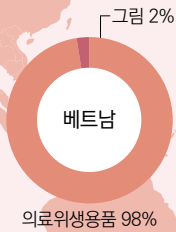
수출



잡제품



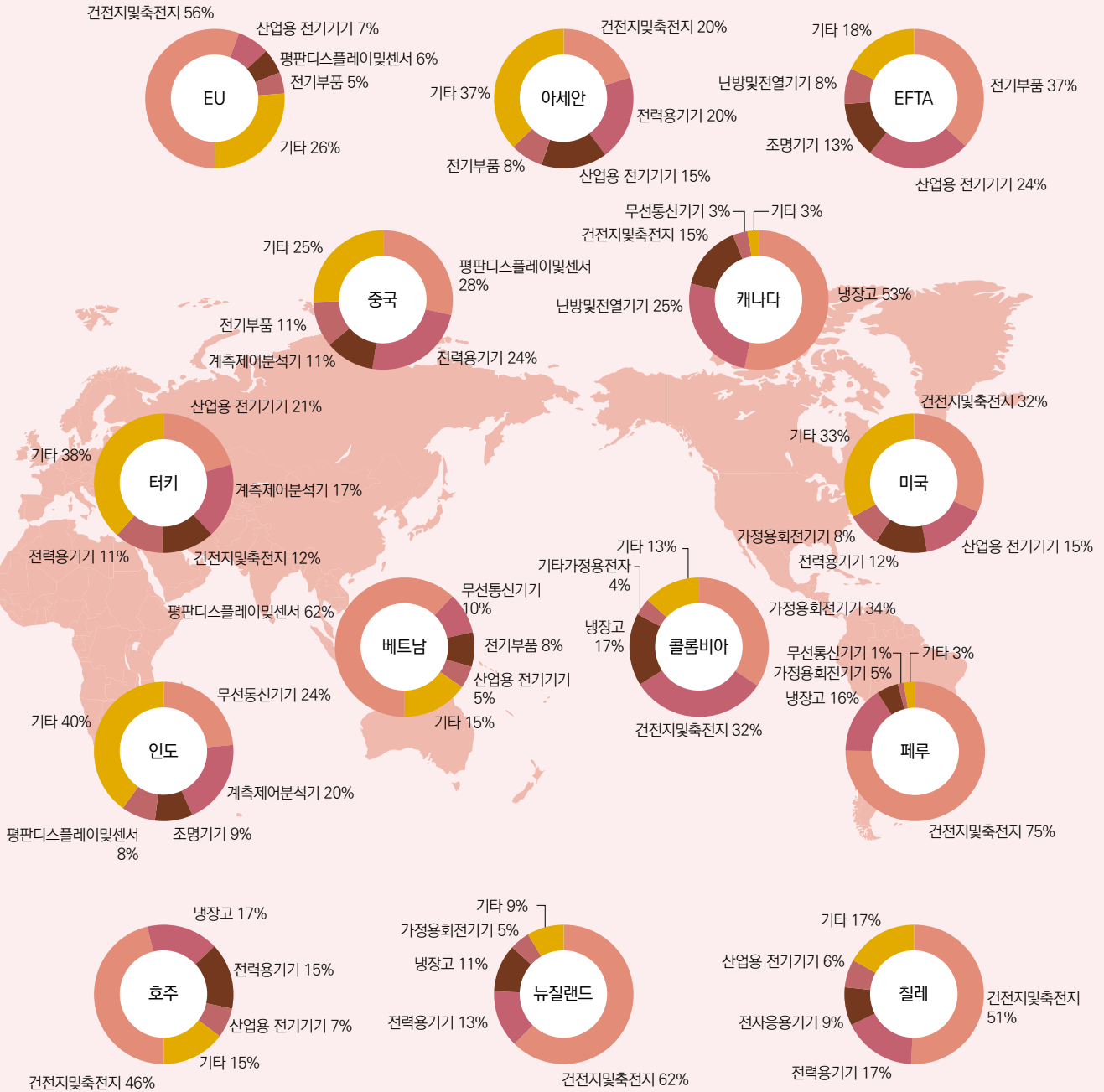
의료위생용품 96%





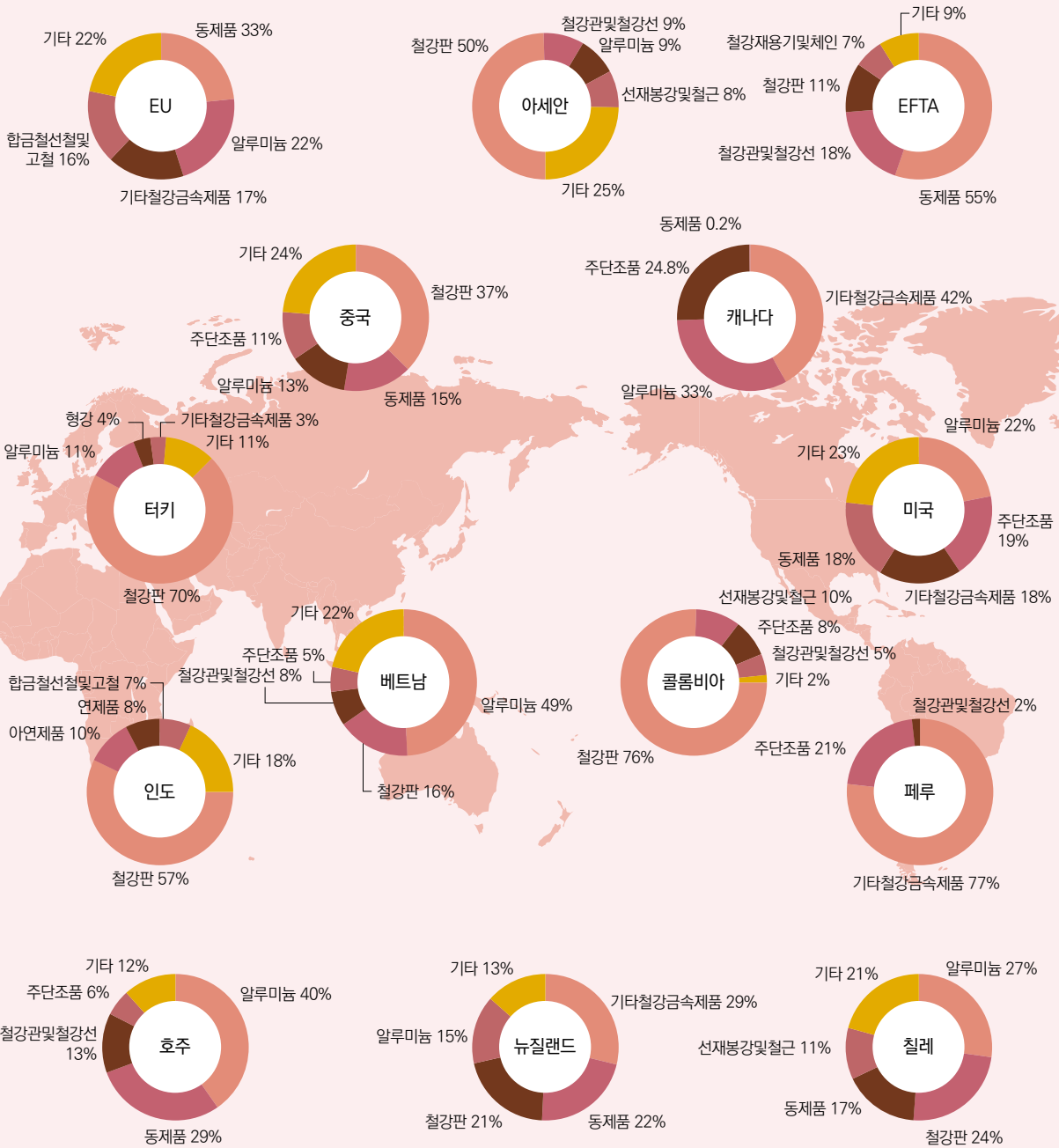
수출

전자전기제품



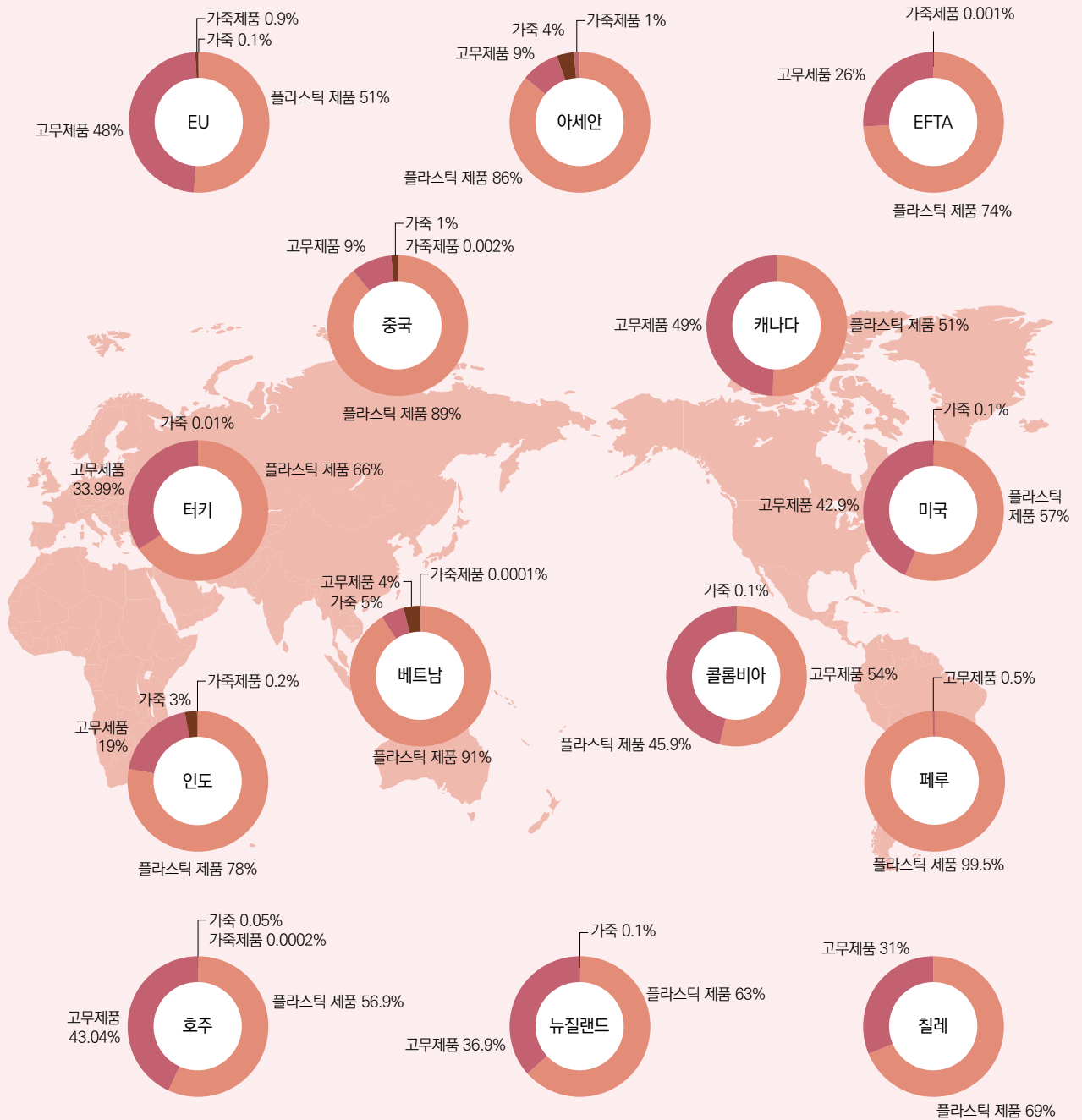
수출

철강금속제품



수출

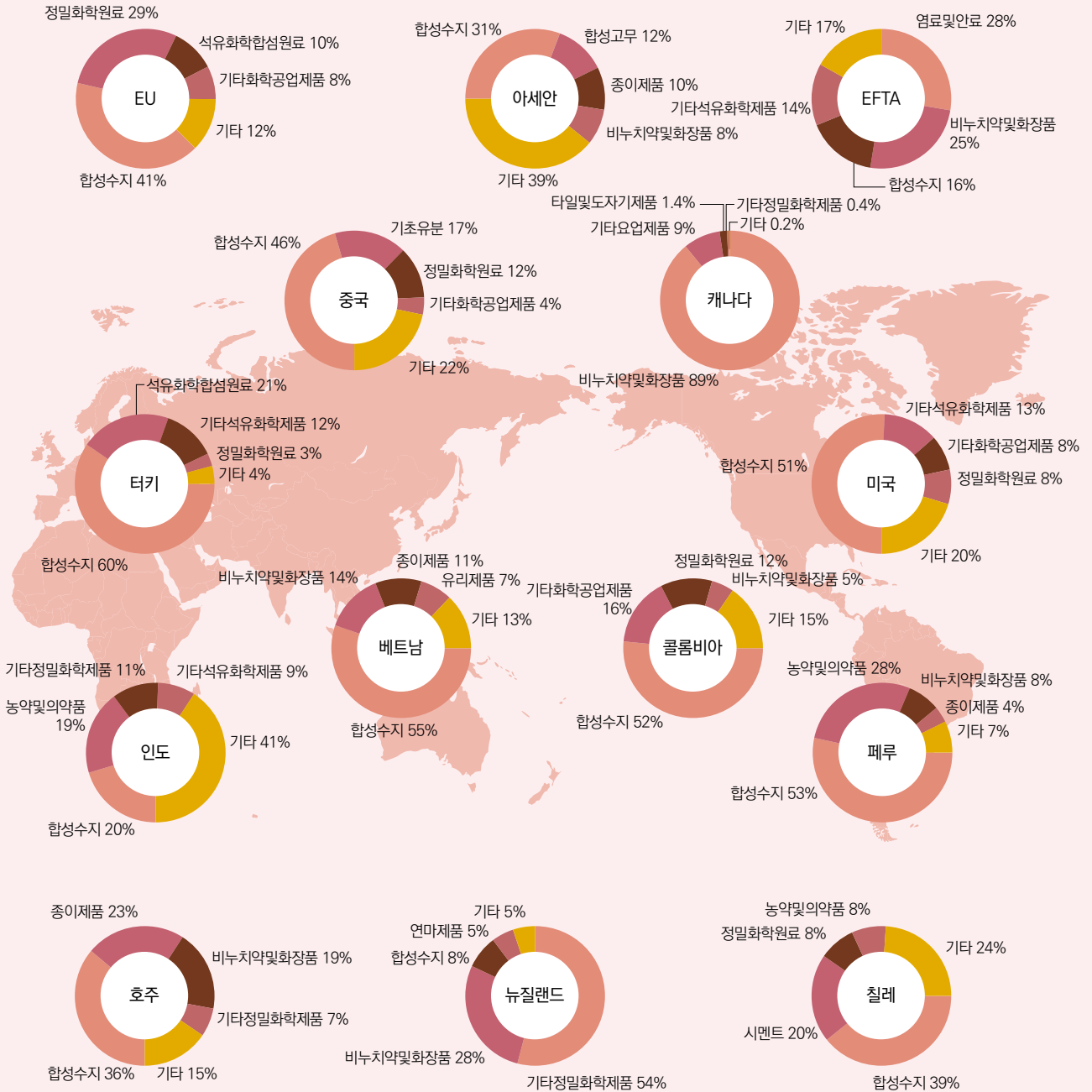
플라스틱고무 및 가죽제품



수출



화학공업제품



## 2020년 1월~9월 주요품목 - 수입

수입(MTI 3단위)

자동차 16%

천연가스 13%

의류 12%

원유 12%

정밀화학원료 11%

신변잡화 9%

육류 8%

농약 및 의약품 7%

석유제품 6%

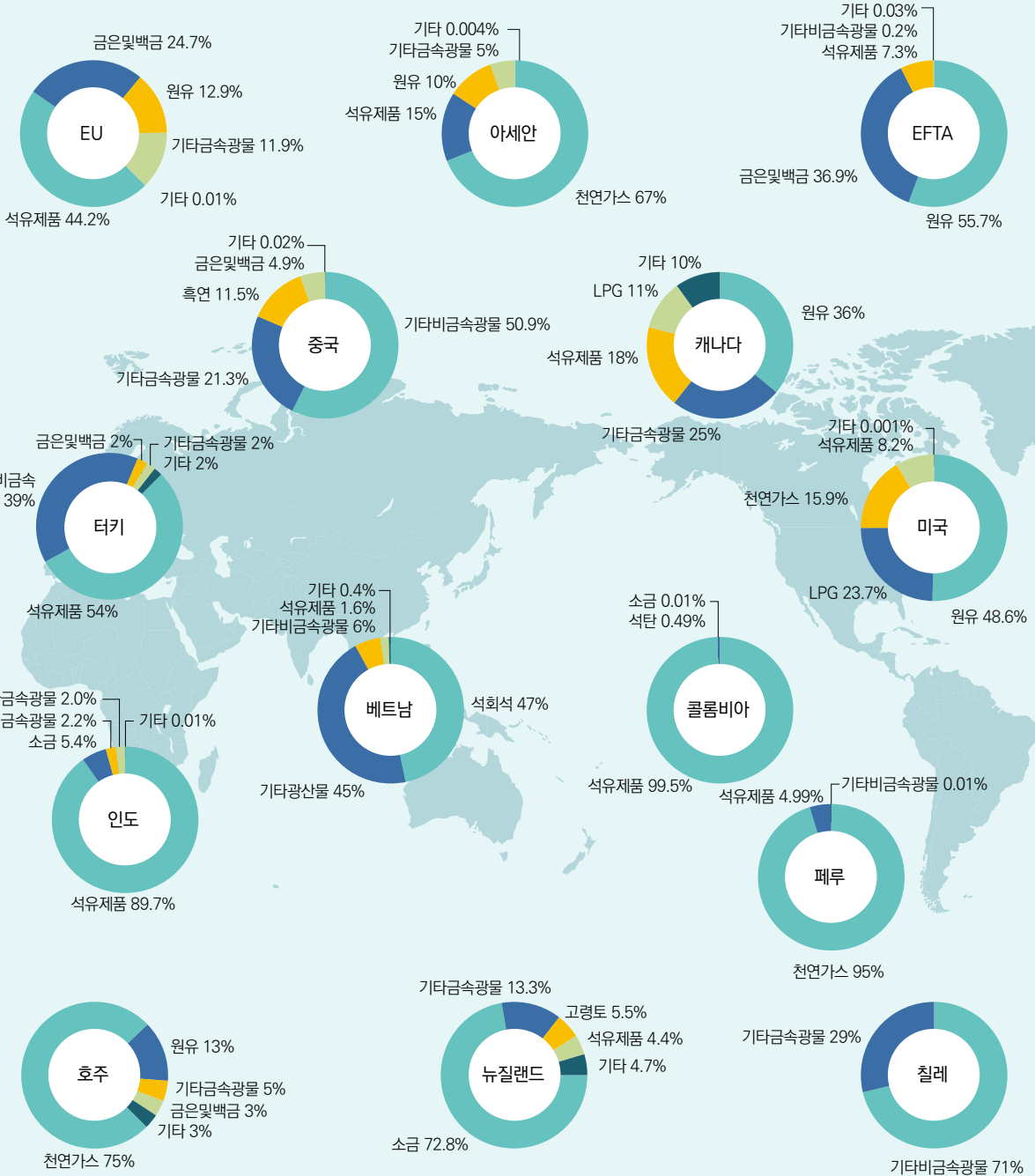
산업용 전기기기 6%

주: FTA 대상금액을 기준으로 주요품목 선정

수입



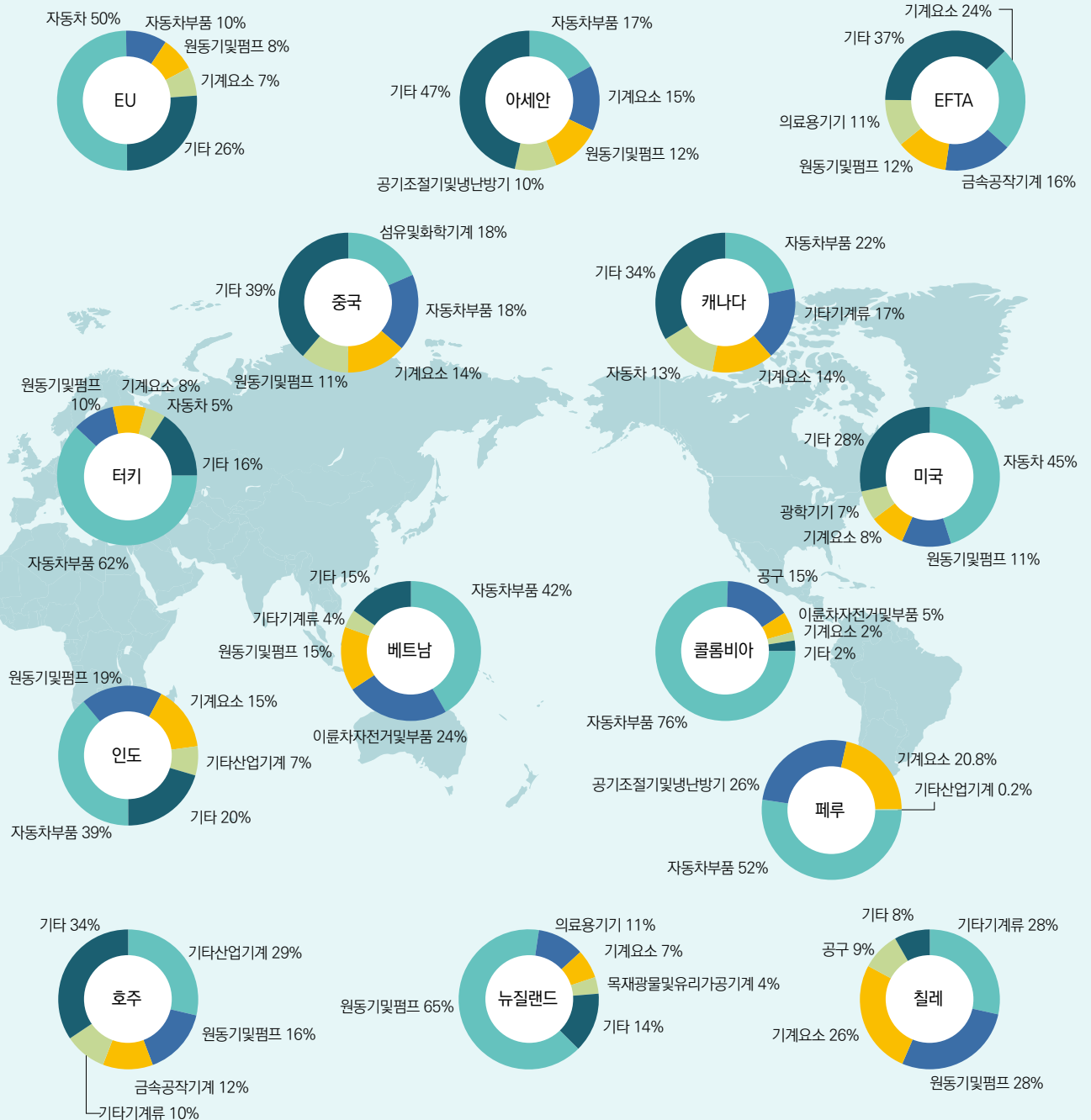
광산물



수입



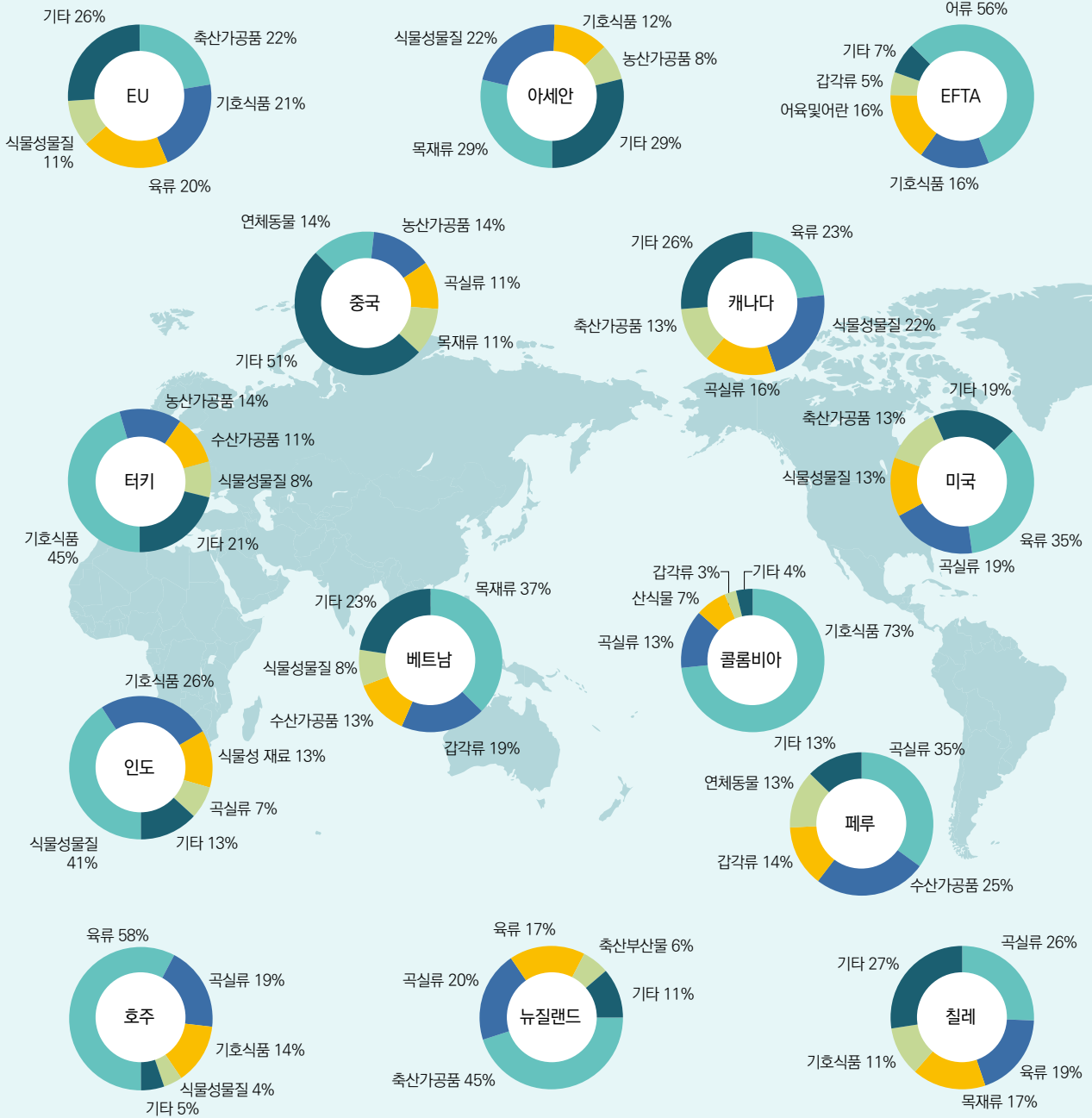
기계류



수입



농림수산물

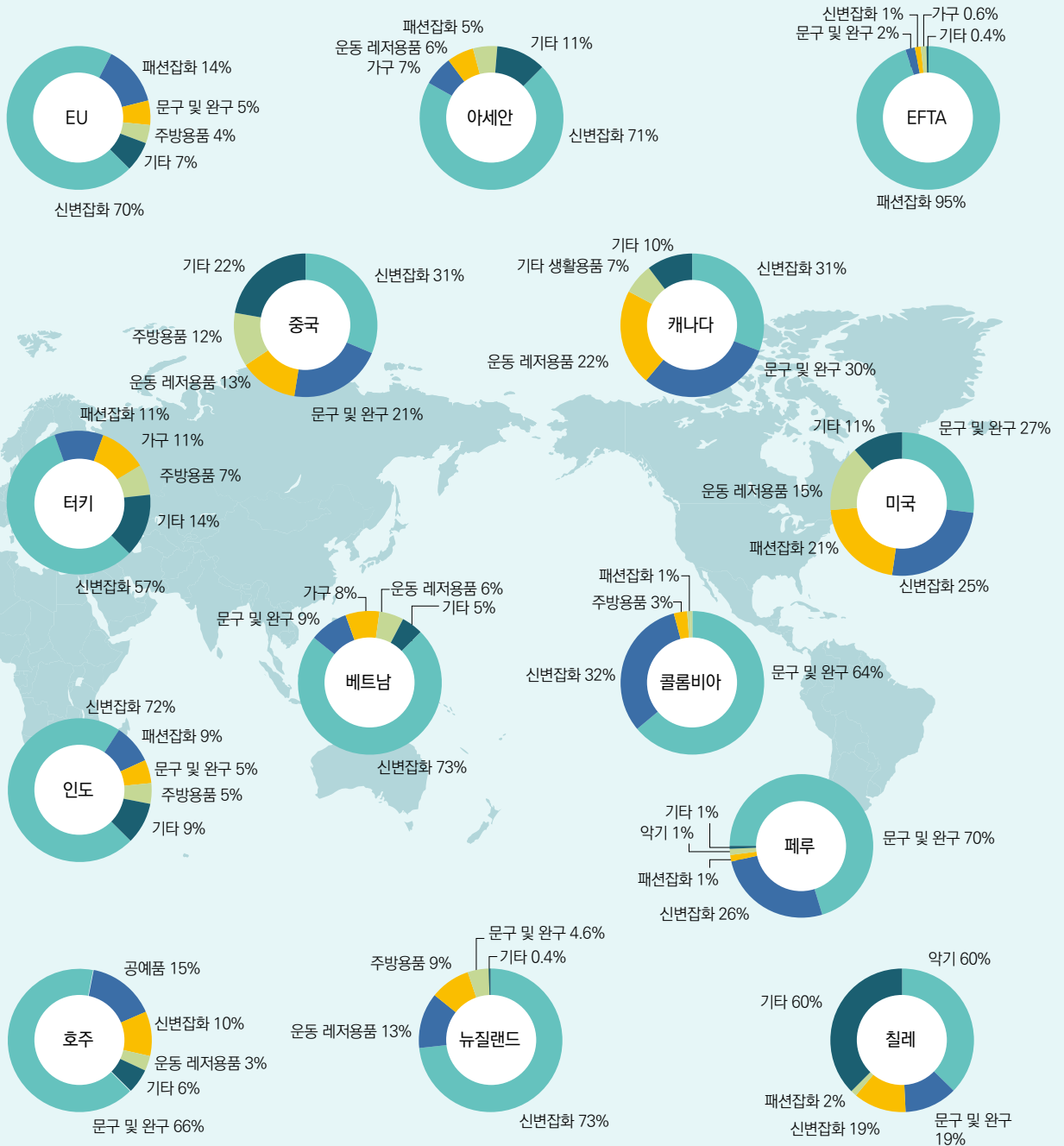




수입

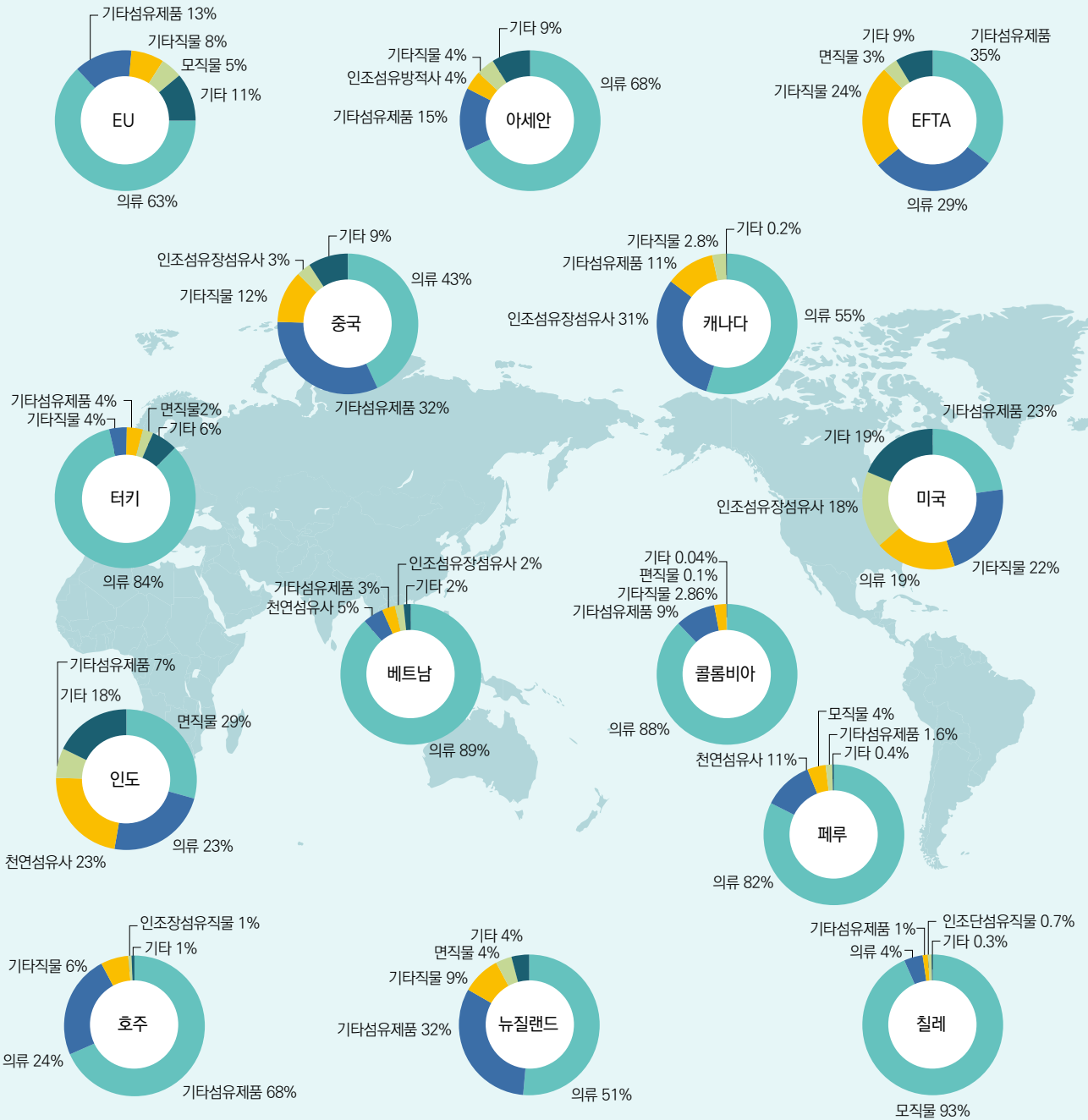


생활용품



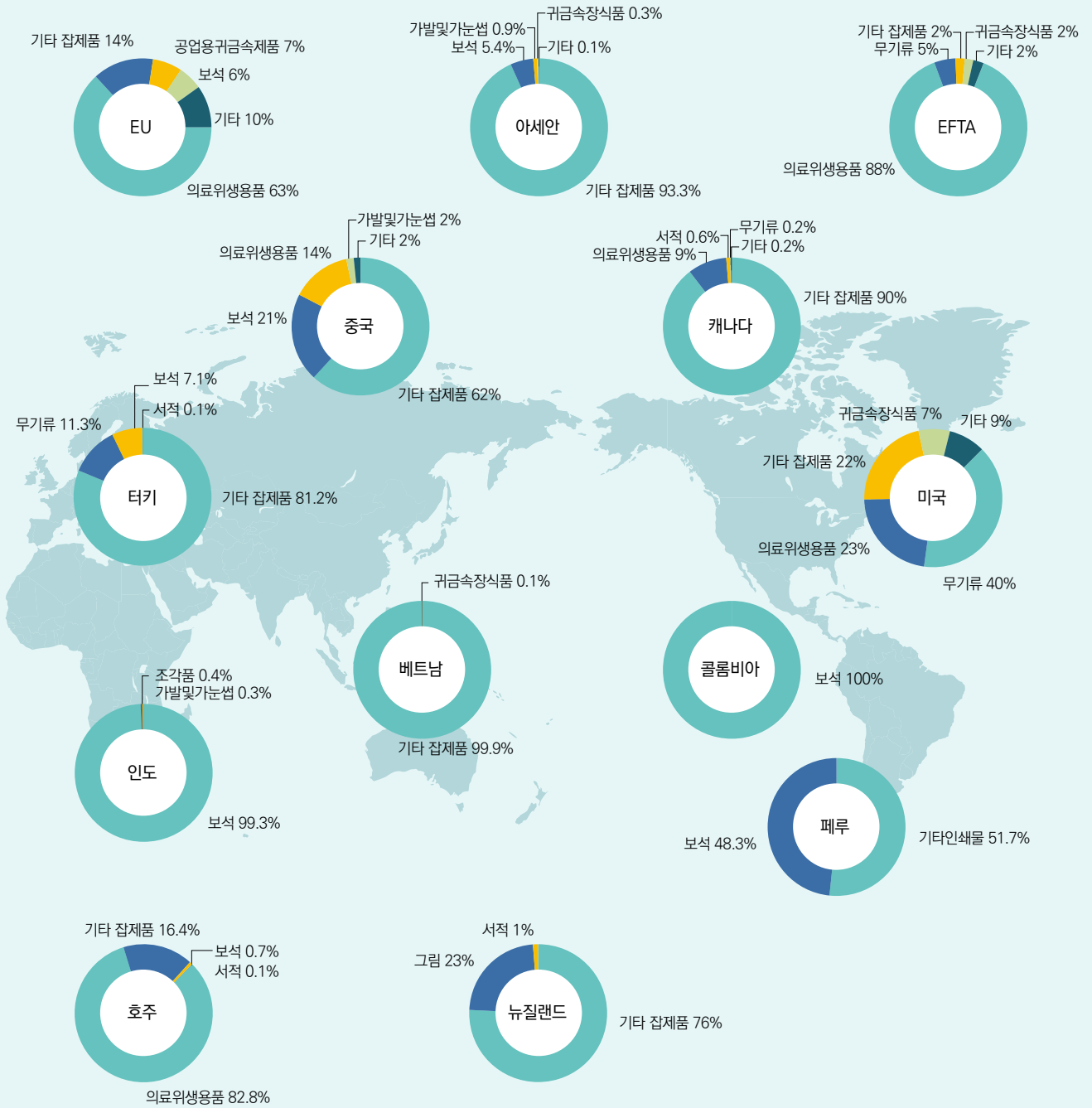
수입

섬유류



수입

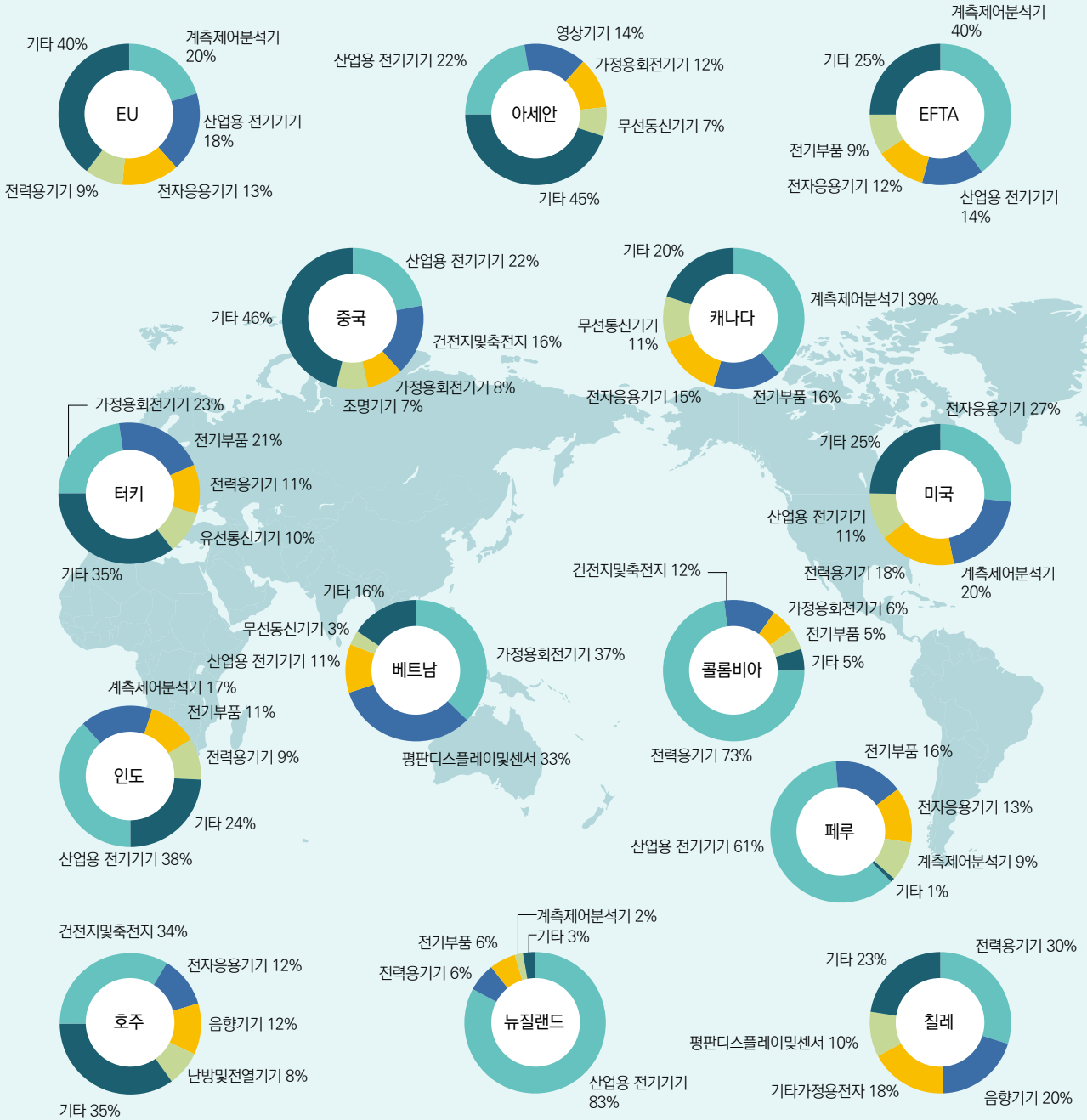
잡제품



수입



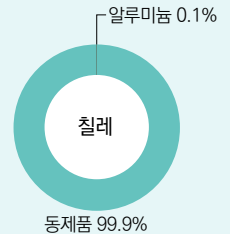
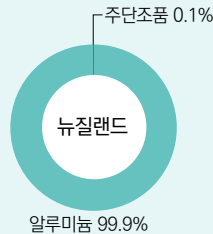
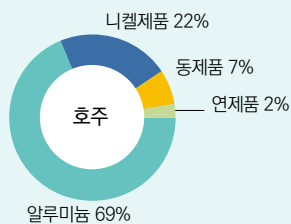
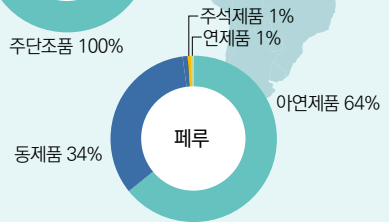
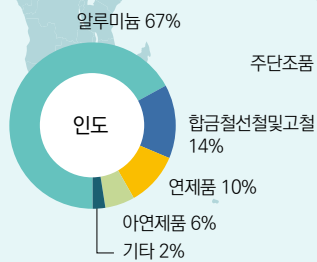
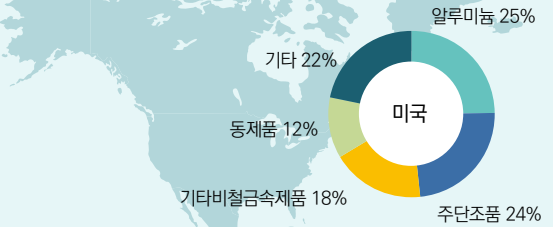
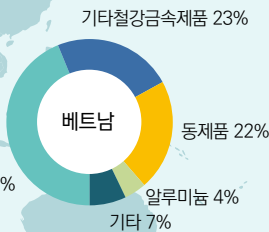
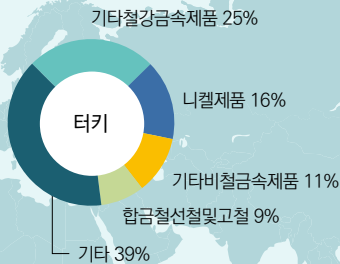
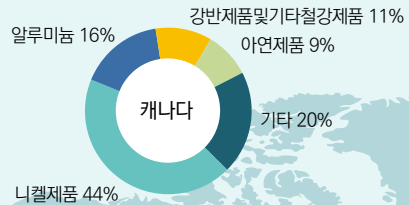
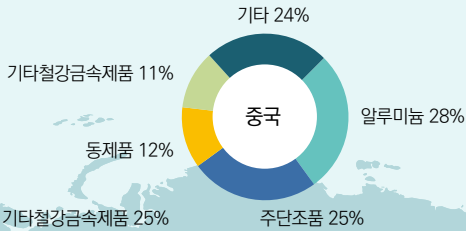
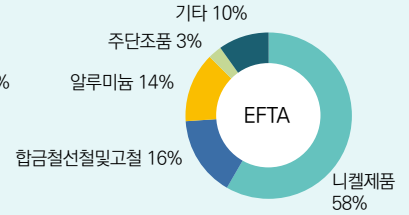
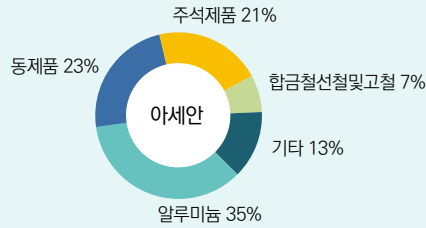
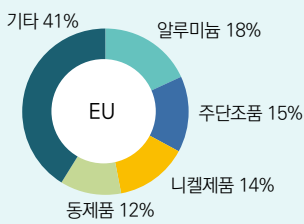
전자전기제품



수입



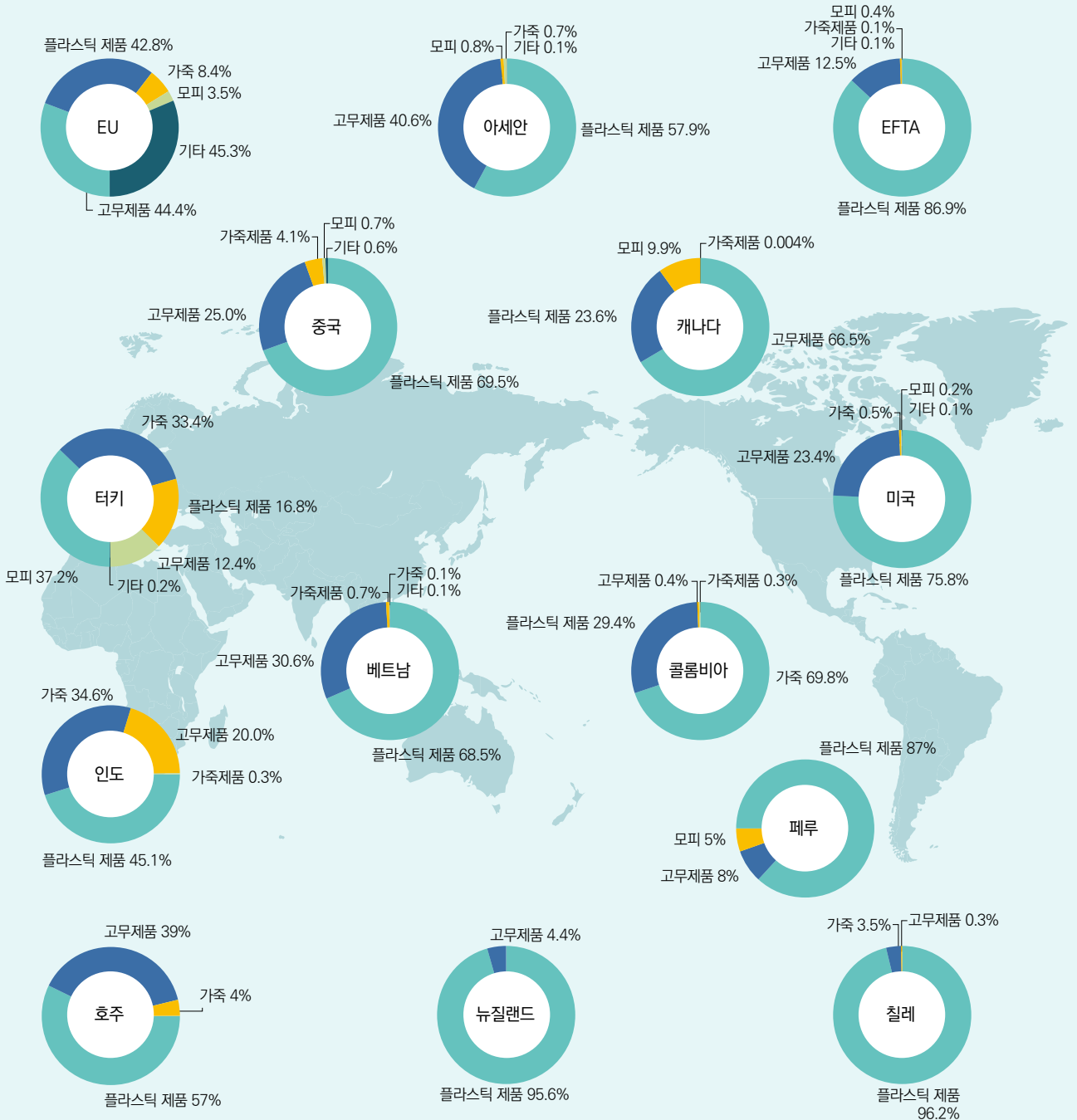
# 철강금속제품



수입



플라스틱고무 및 가죽제품



수입

화학공업제품

